

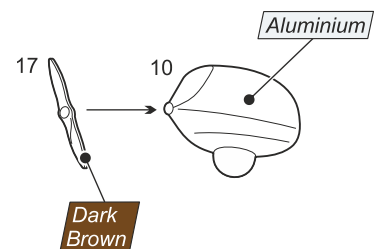
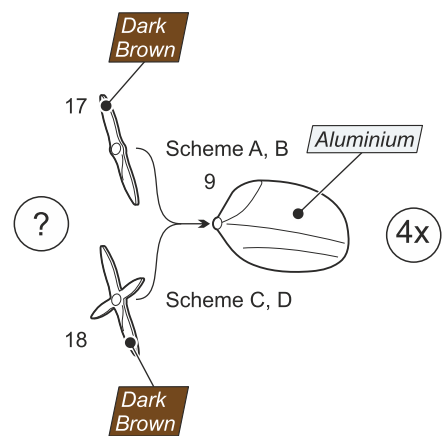
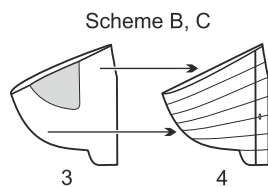
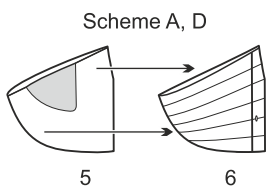
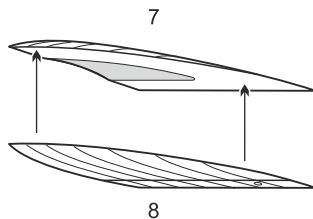
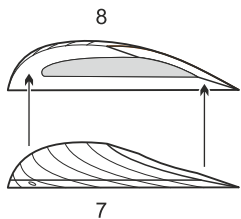
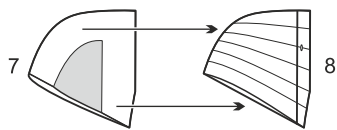
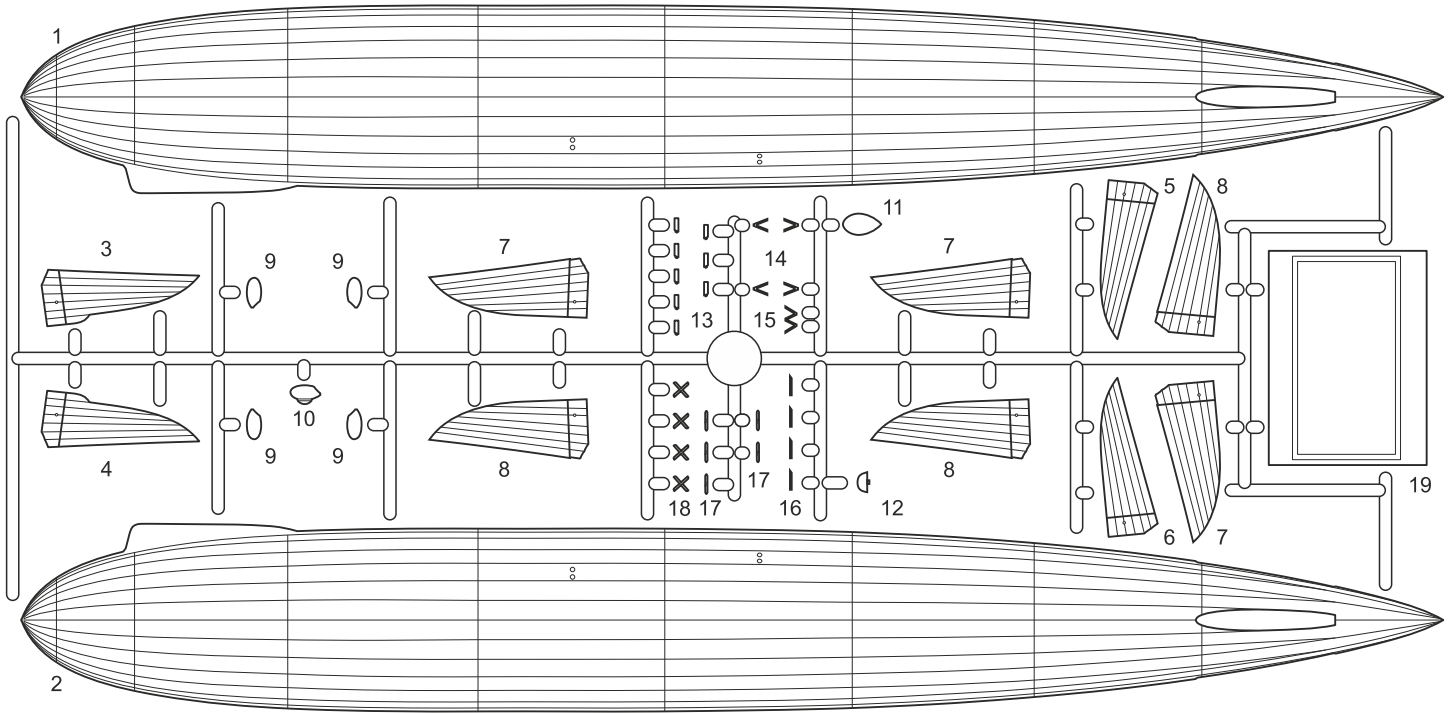
# ZEPPELIN LZ127

## GRAF ZEPPELIN



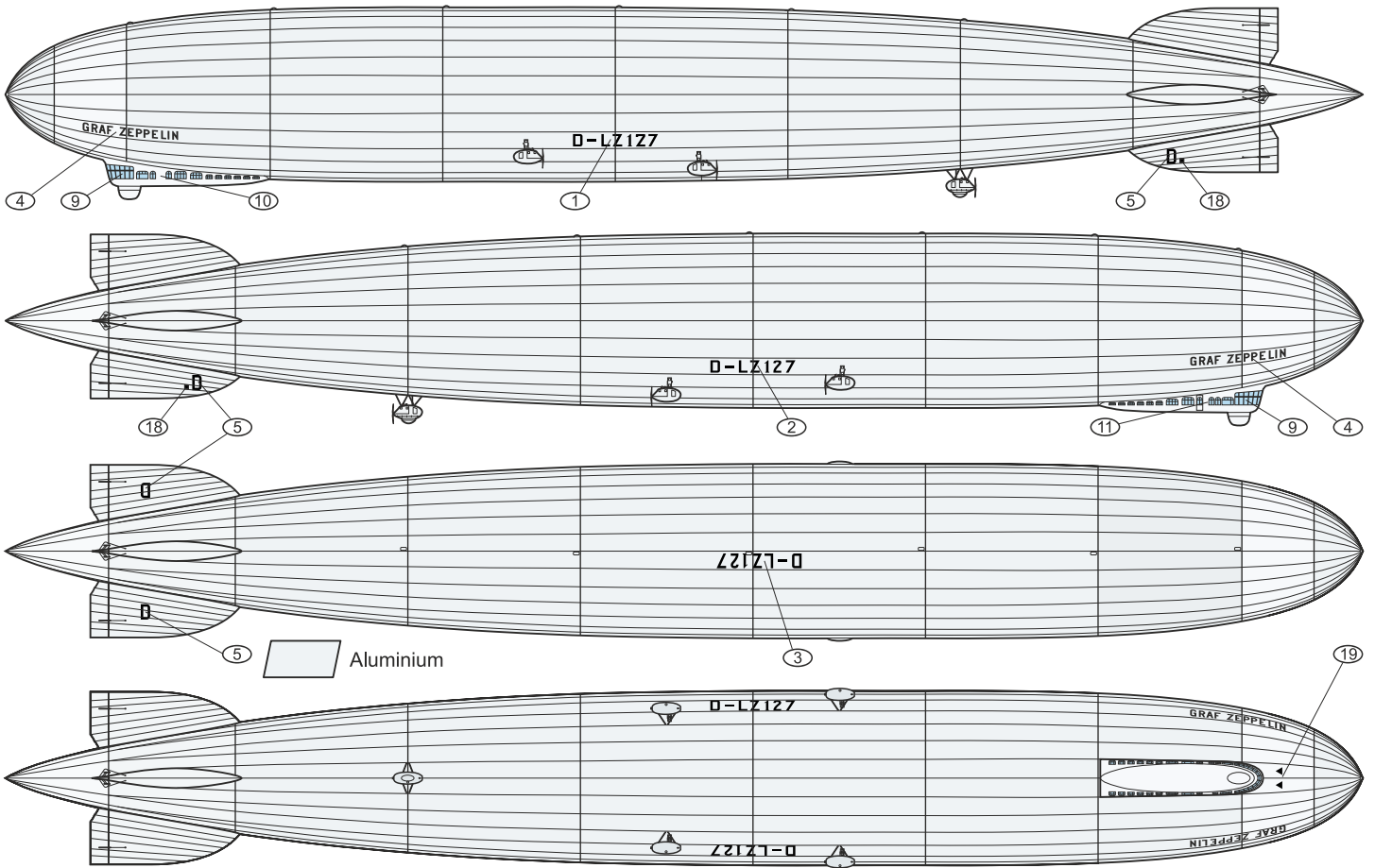
MKM720-05  
1/720 scale

MARK I Ltd.  
PO Box 10  
Prague 10 - Strašnice  
CZ-100 31  
Czech Republic  
mark1@gmail.cz  
www.4pluspublications.com

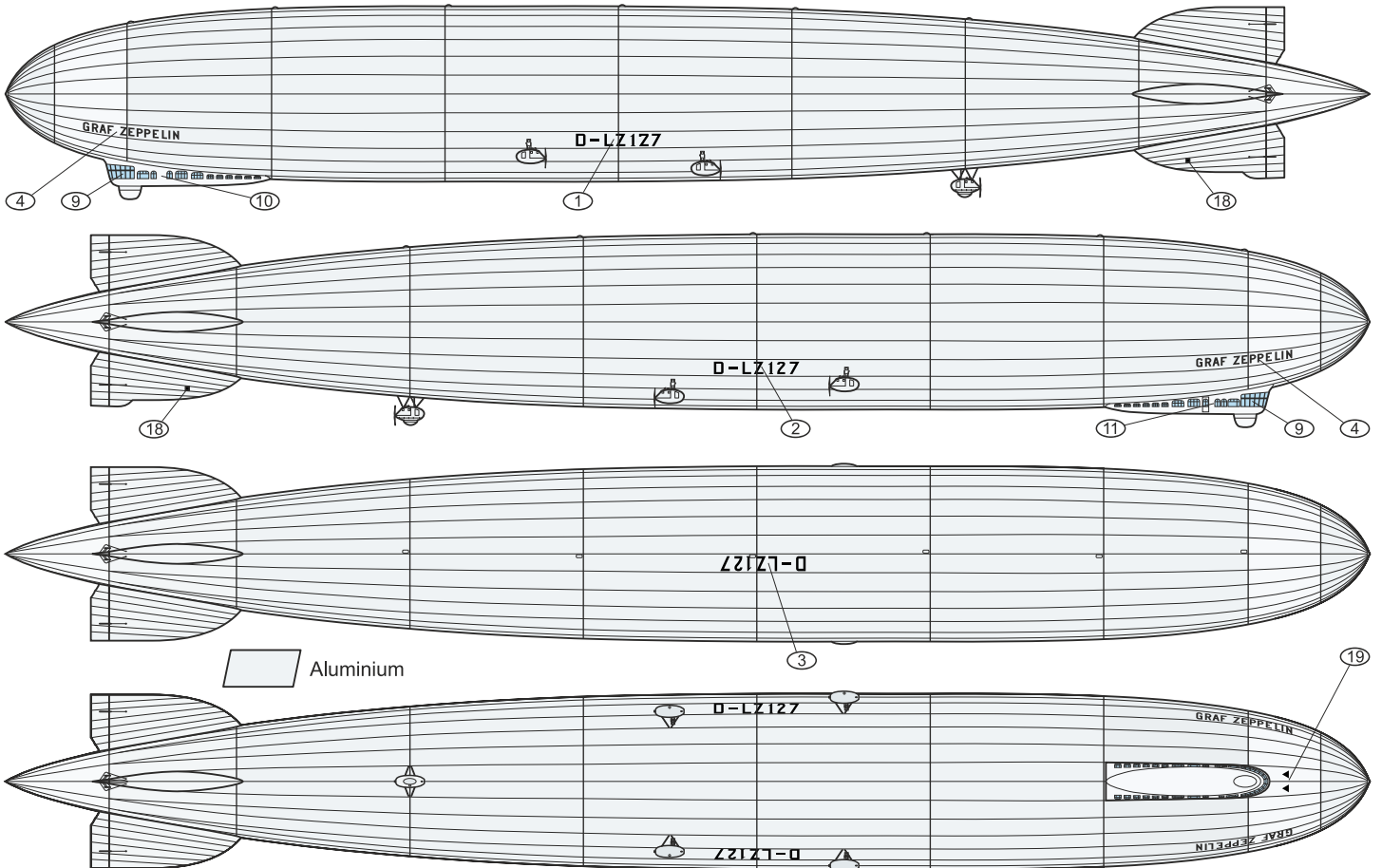




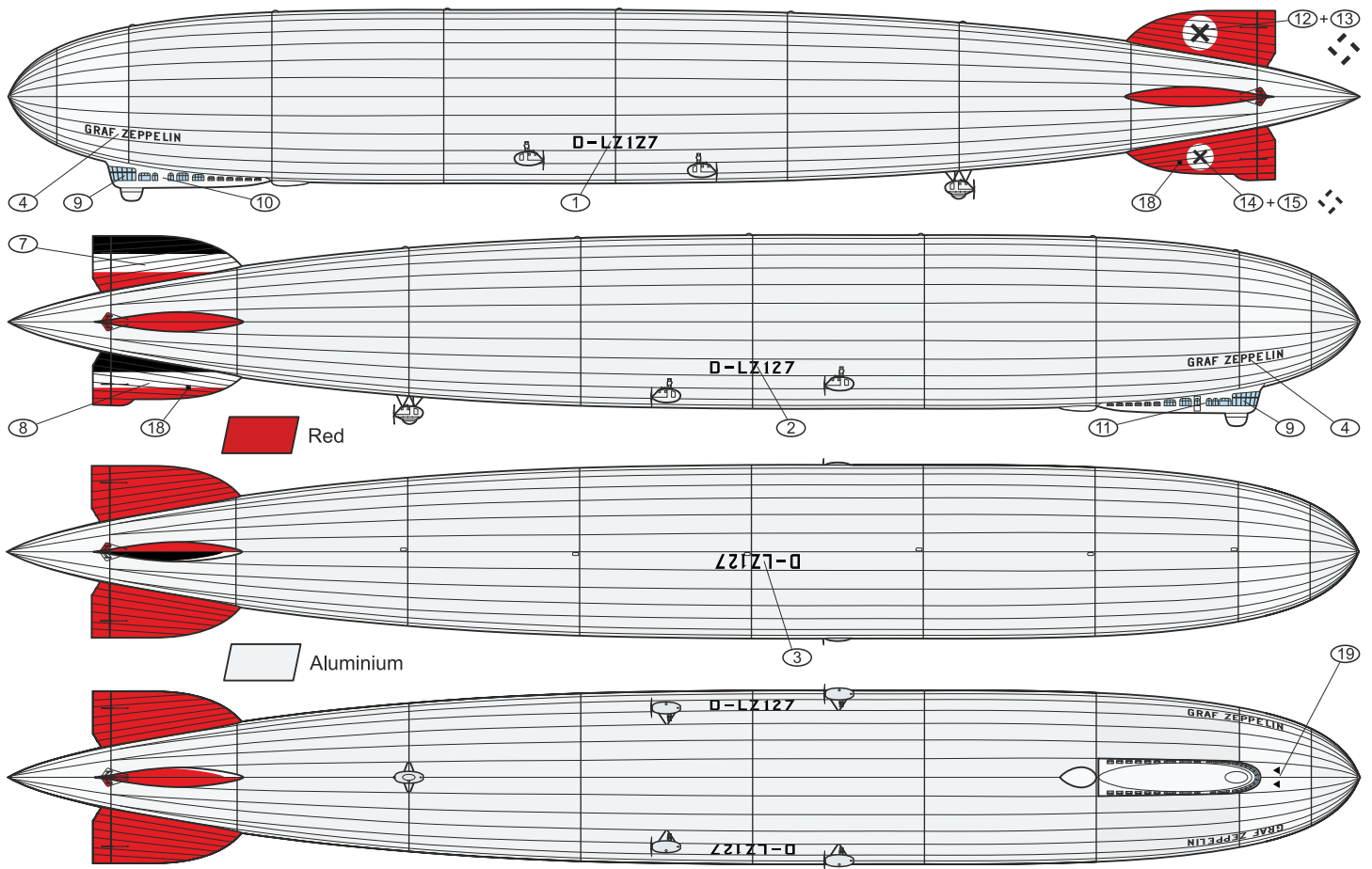
**A** Zeppelin LZ127 'Graf Zeppelin', D-LZ127, Black D, "First Flights 1928-29". The maiden flight took place on 18 September 1928, the first commercial passenger flight across the Atlantic was made in October 1928 from Friedrichshafen (Germany) to Lakehurst (New Jersey, U.S.A.). Operated by the German Airship Transportation Corp. (Deutsche Luftschiffahrts-Aktiengesellschaft, DELAG).



**B** Zeppelin LZ127 'Graf Zeppelin', D-LZ127, "Round-the-World Flight 1929". 32,790 kilometers were flown from Lakehurst (New Jersey, U.S.A.) to Friedrichshafen (Germany), Friedrichshafen to Tokyo (Japan), Tokyo to Los Angeles (U.S.A.), Los Angeles to Lakehurst, 7 - 29 August 1929. Operated by DELAG.



**C** Zeppelin LZ127 'Graf Zeppelin', D-LZ127, "Propaganda and Commercial Flights 1933-36". These flights included the 1933 May Day celebration of labour Berlin flyover, the airship's presentation during the 1933 Chicago "Century of Progress International Exposition" and a number of voyages to South America in the period 1933-36. Operated by DELAG and (from March 1935) by the German Zeppelin Transport Company (Deutsche Zeppelin-Reederei, DZR).



**D** Zeppelin LZ127 'Graf Zeppelin', D-LZ127, "Last Flights 1936-37". After its 136th crossing of the South Atlantic, Graf Zeppelin landed in Friedrichshafen on 8 May 1937. The last flight was made on 18 June 1937 from Friedrichshafen to Frankfurt, where it was displayed until scrapped in March 1940. Operated by DZR.

